



FROGMORE

ST. ALBANS

AL2 2FP

Guide Price £500,000



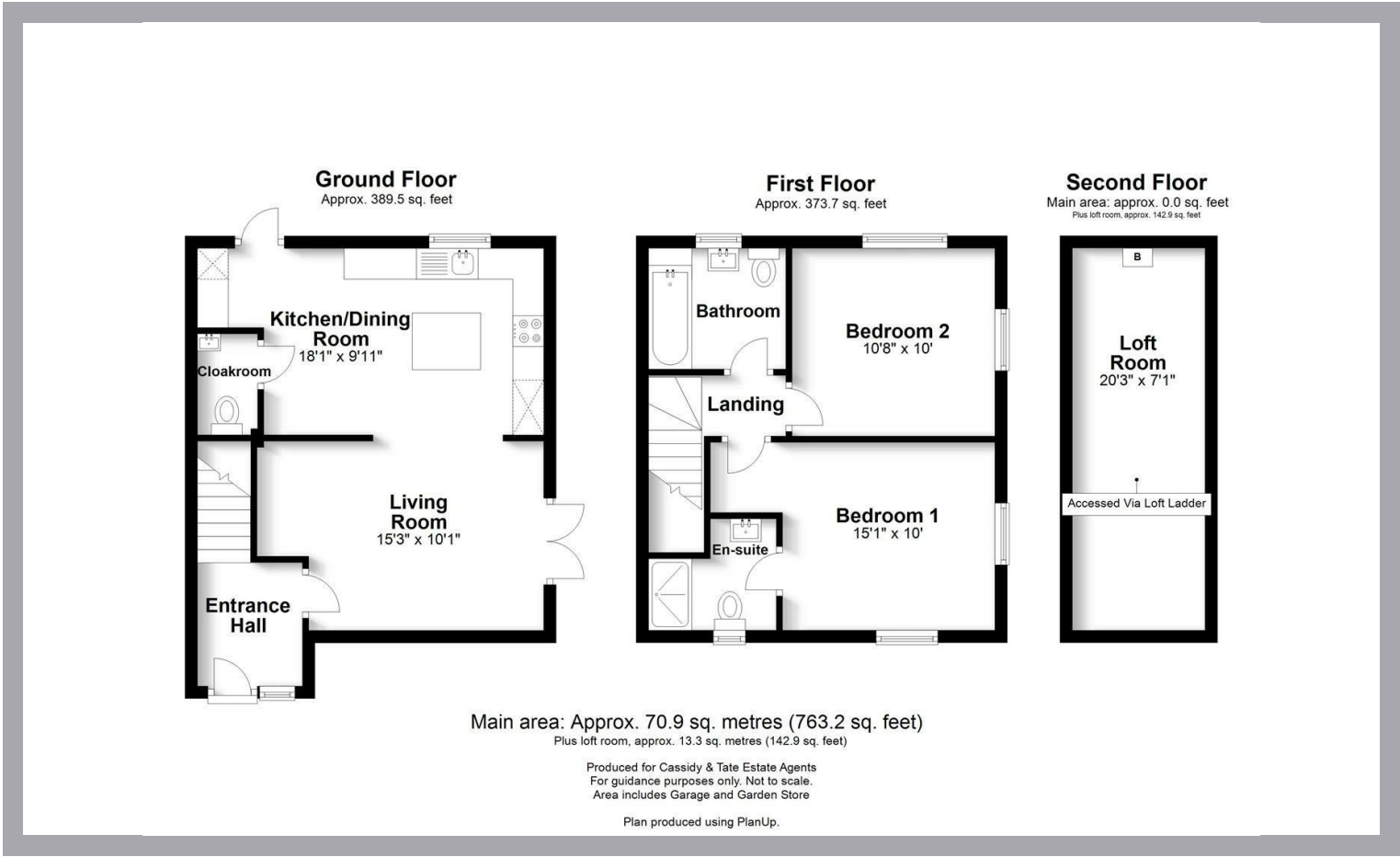
All The Ingredients Needed For A Fabulous Lifestyle

A desirable development by Hornbeam Homes Ltd

Verside is a collection of eight, two bedroom, contemporary homes all offering their own unique features as well as Kutchenaus German kitchens, integrated appliances, underfloor heating to the ground floor, oversized fire doors, porcelain tiles, super fibre optic broadband and alarms. Externally each property benefits from its own parking space. There will also be four parking bays for visitors, and some electric charging points. The properties are positioned in a private location just off the main road and approximately a 15 minute walk to the train station with its fast train services into London.

Plot 5 - Measuring approximately 763.2sq ft - Accommodation briefly comprises of an entrance hall, living room, kitchen/dining room, cloakroom, two double bedrooms, en-suite to bedroom one, family bathroom, fully boarded loft space.





St Albans Office
10 High Street, St Albans
Herts AL3 4EL
01727 228428
stalbans@cassidyandtate.co.uk

Marshalswick Office
59 The Quadrant, St Albans,
Herts AL4 9RD
01727 832383
marshalswick@cassidyandtate.co.uk

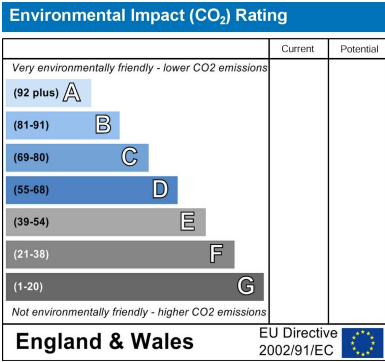
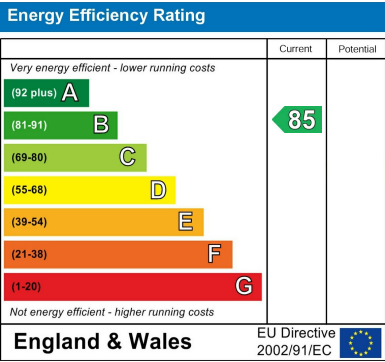
Wheathampstead Office
39 High Street, Wheathampstead,
Herts AL4 8BB
01582 831200
wheathampstead@cassidyandtate.co.uk

Knightsbridge Office
45 Pont Street, Knightsbridge
London SW1X 0BD
020 7629 9966
26@theknightsbridgeoffice.co.uk



Specialists in Bespoke Properties

- Village Location
- 10 Year Warranty
- New Homes
- Electric Charging Points
- Selection of 8 Houses
- Allocated Parking
- Two En-Suites
- Launching Summer 22



Award Winning Agency